

Agron Madison County Spec Building

Canton, MS 39046



AVAILABLE SOON

Located in the same park
as the Amazon Robotic
Fulfillment Center
Located 2 miles from the
Nissan Automotive
Manufacturing Plant



Building Size:	100,000 sf expandable to 300,000 sf	Gas:	Canton Municipal Utilites - 6" Main - on-site
Column Spacing:	50' x 50'	Power:	Entergy - 300 MW, triple redundancy - on-site
Lot Size:	32.1 +/- Acres	Water:	Canton Municipal Utilites - 2 MGD - on-site
Ceiling Height:	32' clear height	Sewer:	Canton Municipal Utilites - 2 MGD - on-site
Walls:	Precast Panels (Internal Insulation)	Data/Fiber:	AT&T, C Spire, Comcast Xfinity
Roof:	60 mill TPO membrane	Transportation:	U.S. Highway 22
Proposed Docks:	Up to 32 Future Docks (Cross Dock Capability)		Interstate I-55
Office:	Corner office entrance		Jackson Medger Wiley Evers International Airport

For More Information Contact:

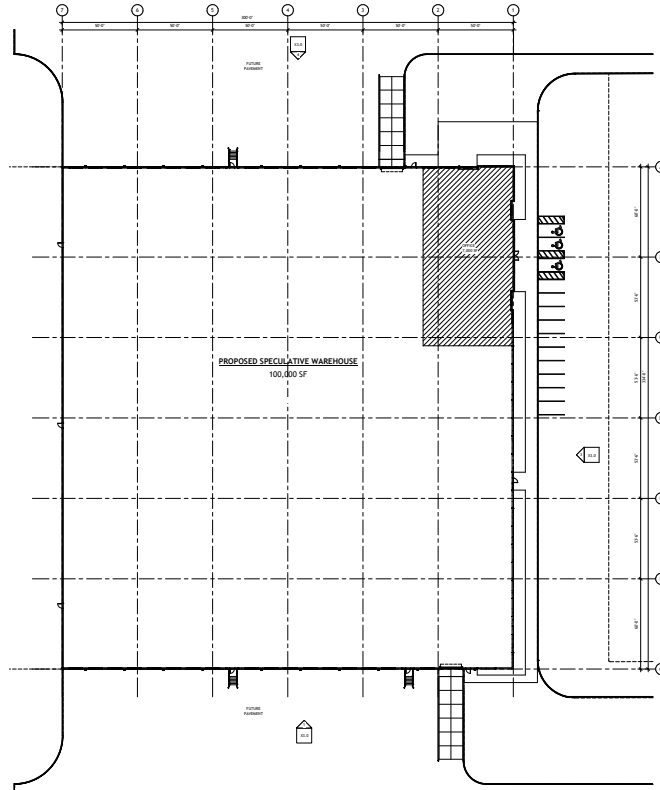


Joey Deason - Executive Director
135 Mississippi Parkway
Canton, MS 39046
jdeason@madisoncountyeda.com
601.605.0368 • www.MadisonCountyEDA.com



Clayton McKinnon - Regional Development Director
P.O. Box 660864
Birmingham, AL 35266
cmckinnon@agrancel.com
205.447.0784 • www.agrancel.com

Conceptual Plan



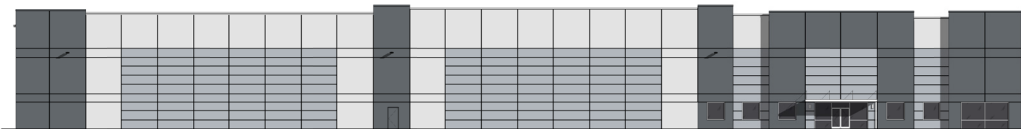
Elevations



4 WEST ELEVATION
1/2" = 1'-0"



3 NORTH ELEVATION
1/2" = 1'-0"



2 EAST ELEVATION
1/2" = 1'-0"



1 SOUTH ELEVATION
1/2" = 1'-0"