

Corinth Spec Building

AVAILABLE SOON

2201 S. Fulton Dr.
Corinth, Mississippi 38837



Building Size:	50,000 sf PEMB expandable on two sides Pad ready for 100,000 sf	Gas:	Corinth Gas & Water
Bays:	100' x 250'	Power:	Alcorn County Electric Power Association
Lot Size:	25 acres	Water:	Corinth Gas & Water
Ceiling Height:	30' clear height	Sewer:	Corinth Sewer Department
Floors:	6" stone base for future concrete slab	Data/Fiber:	ACE Fiber
Columns:	Center row of columns at 50' centers	Rail:	Kansas City Southern Railway
Lights:	TBD	Transportation:	U.S. Highway 72 U.S. Highway 45 I-22 (47 miles)
Ventilation:	TBD		
Docks:	9		
Drive-In Door:	1		

For More Information Contact:



CLAYTON STANLEY
The Alliance
502 Wick St.
Corinth, MS 38834
Cell: 662.287.5269 • www.corinthalliance.com

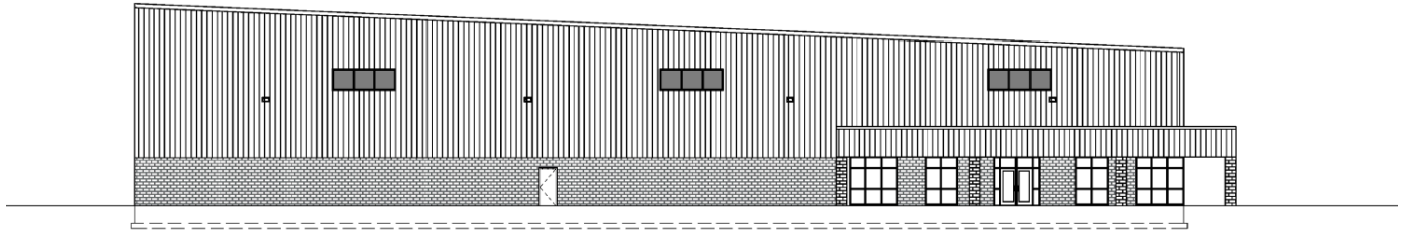


RYAN WITGES, COO
Cell: 217.821.7926

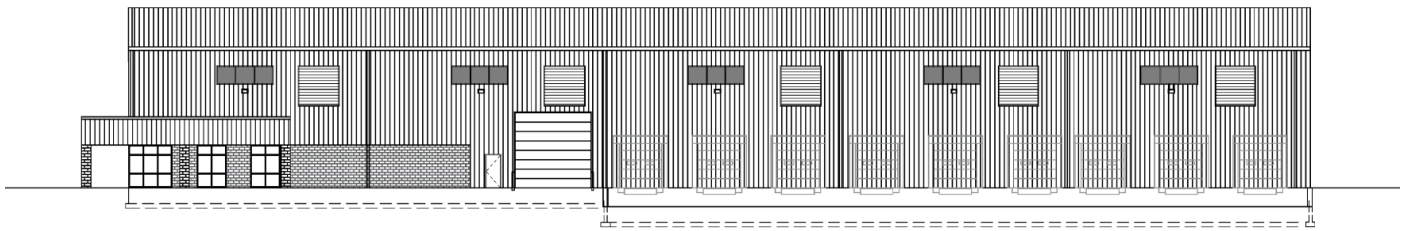
MARK KELLER, Ex. VP and Director of Construction
Cell: 618.553.0506

2201 N. Willenborg St., Suite #2, Effingham, IL 62401
www.agracel.com

Building Elevations



EXTERIOR ELEVATIONS - WEST



EXTERIOR ELEVATIONS - SOUTH

Site Location

